

PART OF N.E. 1/4 OF SEC. 23, T.5N., R.1W., S.L.B. & M.  
**BONNEVILLE TERRACE SUBDIVISION NO. 2**

170

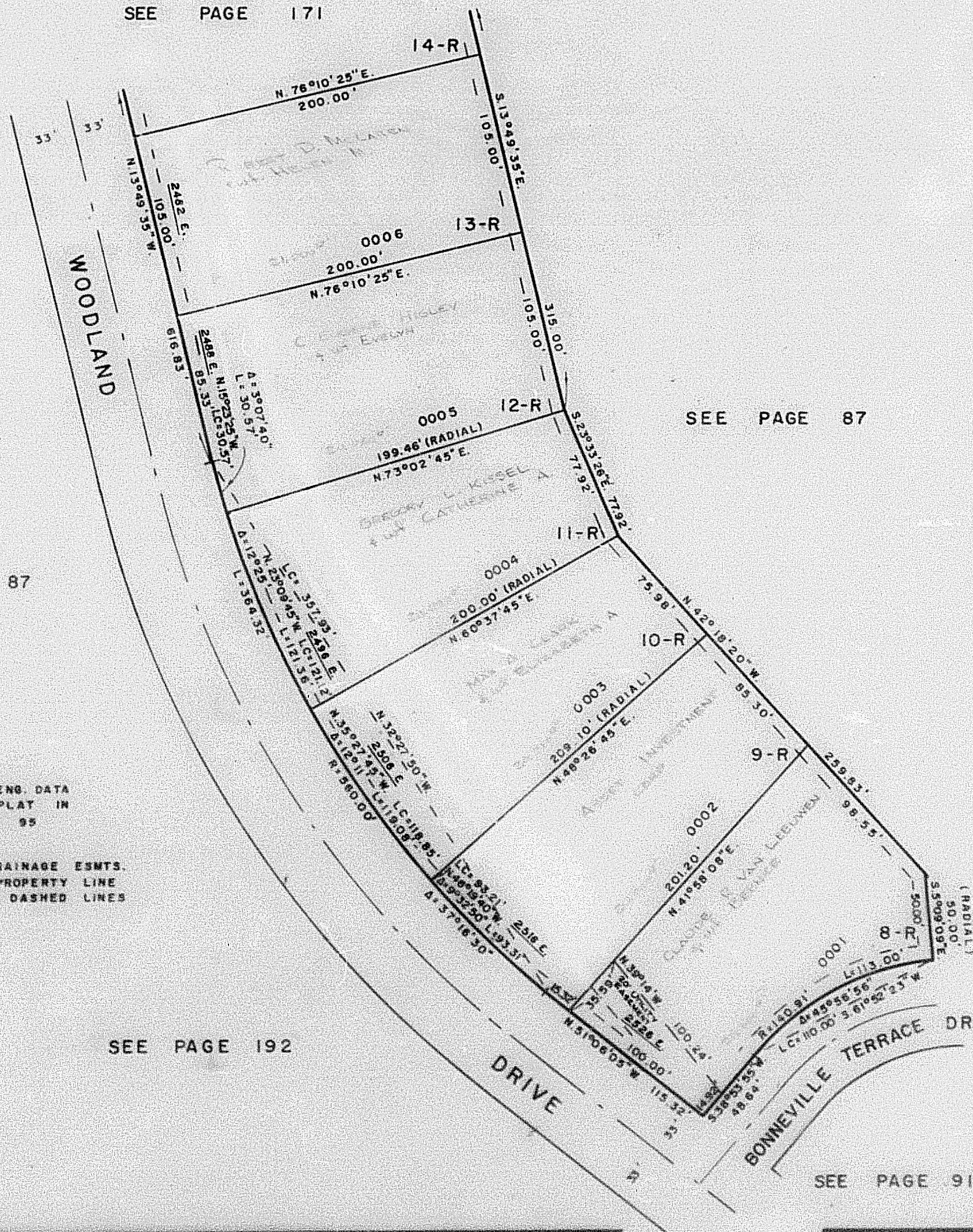
TAXING UNIT 58

IN WEBER COUNTY

PREFIX 07-170

SCALE 1"=50'

SEE PAGE 171



SEE PAGE 87

SEE PAGE 87

FOR COMPLETE ENG. DATA  
 SEE ORIG. DED. PLAT IN  
 BOOK 18 PAGE 95

7' UTILITY & DRAINAGE ESMTS.  
 EACH SIDE OF PROPERTY LINE  
 AS INDICATED BY DASHED LINES

20' UTILITY EASEMENT OVER  
 AND ACROSS LOTS 9-R THROUGH  
 18-R, INCLUSIVE, RELEASED  
 (1193-898)

SEE PAGE 192

SEE PAGE 91